



# THE CURIOUS CASE OF THE CHRISTMAS CARBIDE PARTICLES

As the AM industry matures and users become comfortable with established technologies and materials, it is natural that more exotic fields will be explored. One such field is metal carbides, ceramics and so-called cermets. With near unparalleled hardness and strength properties but few viable forming technologies available, processing these materials with AM represents an exciting avenue of exploration. However, AM processing is not the only hurdle—first the material needs to be available in an appropriate form, specifically spherical powder.

High temperature melting materials are typically broken down from bulk form by means of pulverization or milling. This is made easier by chemical processes such as hydride dehydride (HOH). The resultant material is in a granular form, and not suitable for AM processing in this state.

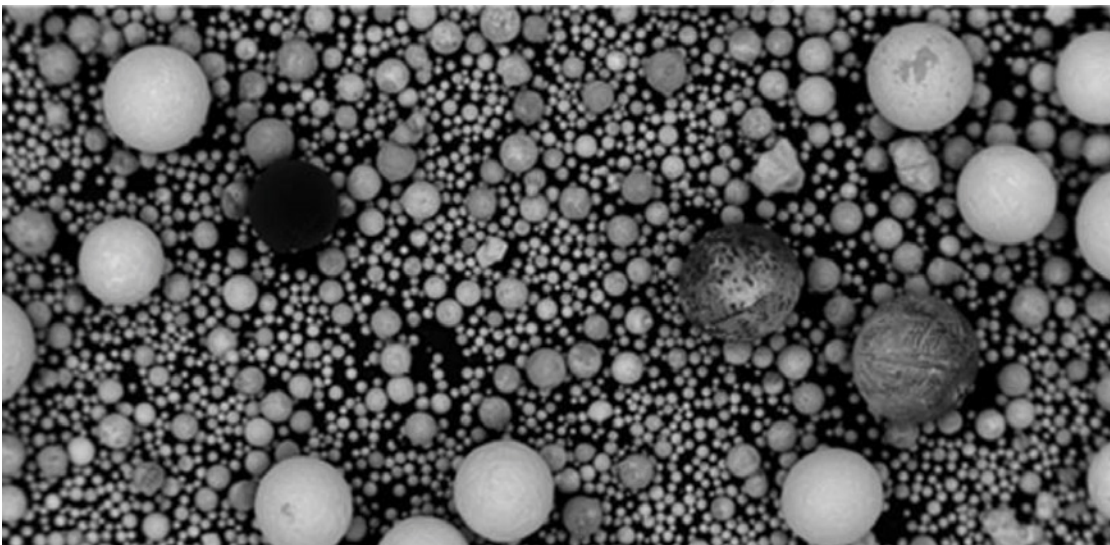
---

Plasma spheroidization technology such as that held by Carpenter Additive can be used to process granular material into spherical powder that is more suitable for AM processes.

Carpenter Additive has trialed carbides and cermets on our spheroids. As part of these trials, samples are taken to assess the morphology and size of the product by SEM imaging and other methods. For the most part, we are just looking at gray spheres of different sizes, but occasionally the complexities of metallurgy result in particles that are more intriguing. Following are a few examples of what we have found.

The initial spheroidization run looked at material that had not been extensively screened prior to the trial. The particles, shown in Figure 1, were found in this early WC trial, prior to any material optimization. The homogeneous light gray particles are those containing the specified 4 wt% of carbon. However, the three particles running through the center of the image were found to have different ratios of C to W, leading to the clear variations in particle microstructure compared to the general population. From left to right, carbon content was measured to be 21 wt% C, 7 wt% C, and 9 wt% C.

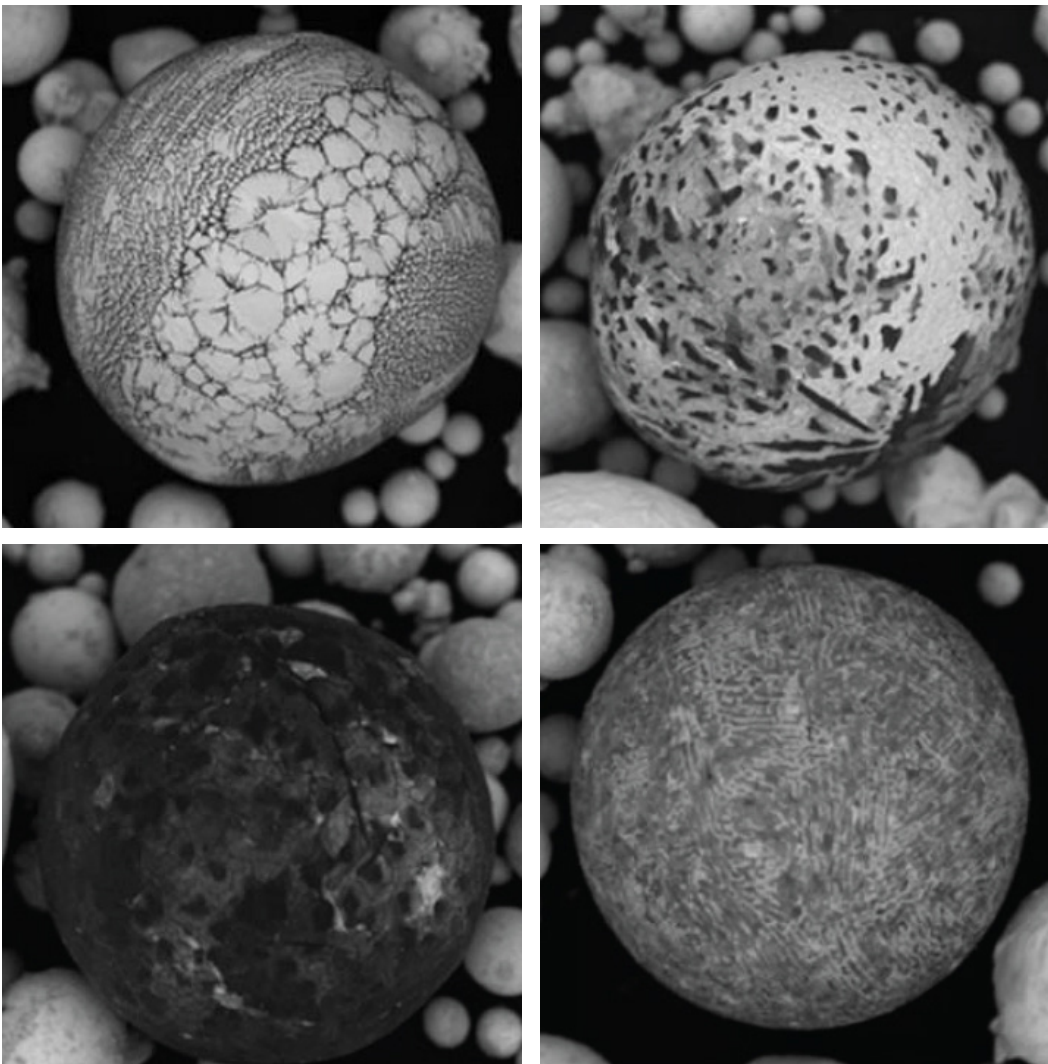
**FIGURE 1. EARLY TRIAL OF SPHEROIDIZED WC SHOWING PARTICLES WITH DIFFERING ELEMENTAL COMPOSITION.**



Given that carbon has a significantly lower atomic weight than tungsten, 21 wt% converts to an atomic percent of 80 wt%, and therefore carbon is actually the primary element in this particle. As a result, it is homogenous in appearance but considerably darker due to it being significantly less dense than the general population.

The other two particles display inhomogeneous microstructures due to solute redistribution during solidification—either in carbon-tungsten or tungsten-carbon systems. As the molten material solidifies, the small carbon particles diffuse ahead of the solidification front, creating a difference in concentration of solution. As the crystals grow, the higher solution concentration liquid is pushed to the boundaries. The different ratios of tungsten to carbon result in different solidification kinematics, and we end up with a range of fascinating structures, as shown in Figure 2.

**FIGURE 2. WC RATIOS REVEAL FASCINATING STRUCTURES IN METAL POWDER PARTICLES.**

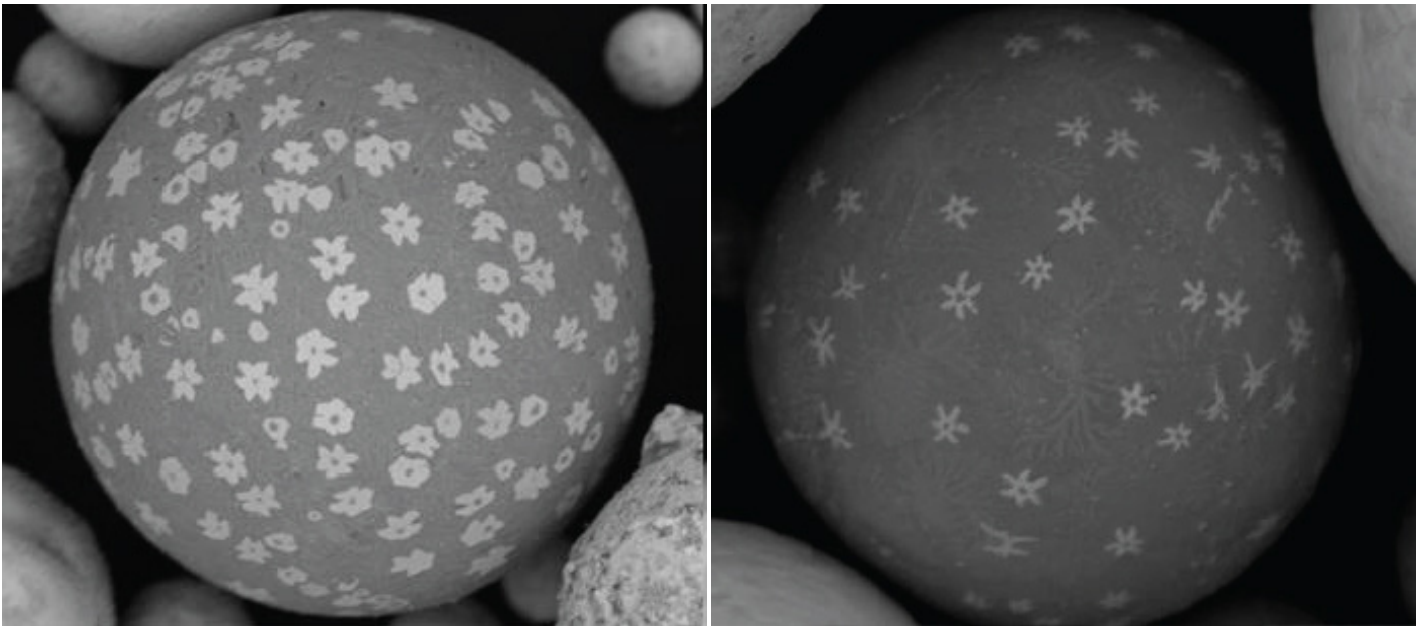


Such microstructural phenomenon is not limited to the WC system. In Figure 3, we see a different type of surface feature when processing FeWC cermet. This time, we observed geometric precipitations on the surface of the particles, which after chemical analysis were revealed as a tungsten-rich secondary phase.

Given the time of year of these observations, we could not help but draw comparisons with the most recognizable of crystal structures — and certainly these are the most festive powder particles we have ever come across.



**FIGURE 3. BRIGHTLY COLORED, TUNGSTEN-RICH FEATURES IN FE-WC CERMET POWDER MATERIAL.**



**For additional information, please  
contact your nearest sales office:**

info@carpenteradditive.com | 610 208 2000

---

*The information and data presented herein are typical or average values and are not a guarantee of maximum or minimum values. Applications specifically suggested for material described herein are made solely for the purpose of illustration to enable the reader to make their own evaluation and are not intended as warranties, either express or implied, of fitness for these or other purposes. There is no representation that the recipient of this literature will receive updated editions as they become available.*

*Unless otherwise specified, registered trademarks are property of CRS Holdings LLC, a subsidiary of Carpenter Technology Corporation.*

---